

Repetitive Measurement Workflow

Two methodologies:

- Traditional **Route-based** Measurement for asset condition measurement
- Test and Measurement Experiments, where camera remains stationary over subsequent, repetitive measurements

Enabling Camera Overlay begins with setting "Set Reference" on an existing recording.

Menu items: Motion Optimization, Open File Location, Move Files, Copy Filters, Apply Filters, Amplify Recording, Compact Recording, Set Reference, Copy ROIs, Paste ROIs.

Name	Description	Size
2023_09_07_134640.700		1.7 GB
2023_09_07_134836.219		1.7 GB
9/7/2023 1:16:02 PM		
9/7/2023 12:56:59 PM		

Show overlay reference image with live feed for proper camera alignment.

Toolbar icons: Zoom in, Zoom out, Refresh, Left arrow, Right arrow, Up arrow, Down arrow, Rotate, Grid, Reference image, Camera overlay.

Camera Overlay Mode

The v3.7 software utilizes a Camera Overlay Mode and Route-based ROI Finding Tool to ensure the camera field of view is consistent over multiple measurements. This helps users position the camera and tripod in an identical position for repeatable measurements. The software manages minor discrepancies using Route-based ROI Finding technology to ensure ROIs measure the same object every time.

Recording Properties:

- Name: Motor_Piston_01
- Distance: 7.3 ft
- Focal Length (mm): 25
- Acquisition Type: Standard
- Duration (sec): 4
- Asset Speed (RPM): 0

Recording Association:

- Meas. Location: Motor_Piston
- Asset: Training Compressor

Camera Properties:

- Framerate (fps): 194
- Brightness (%): 36
- Gain (dB): 0
- Image Rotation: None

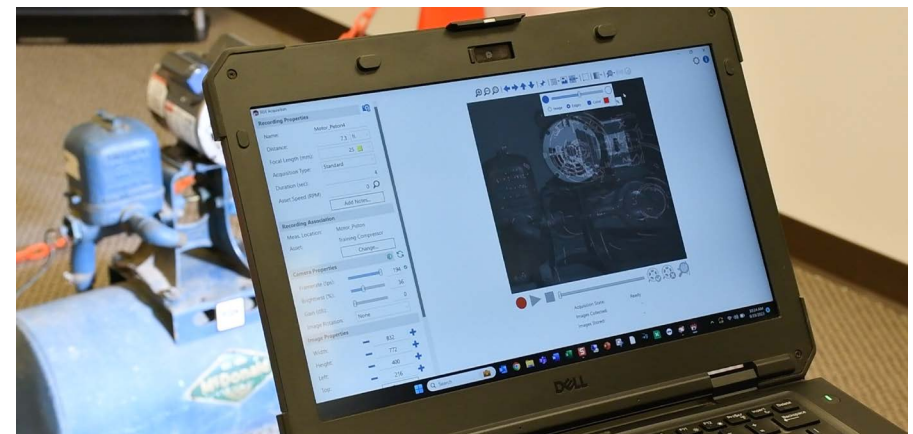
Image Properties:

- Width: 832
- Height: 772
- Left: 400
- Top: 216

Acquisition State: Ready

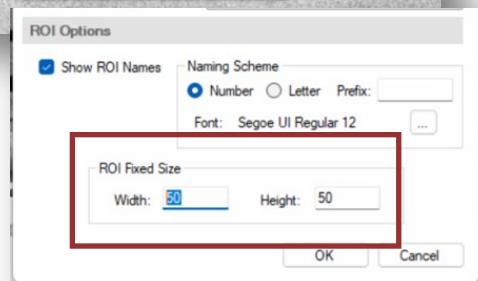
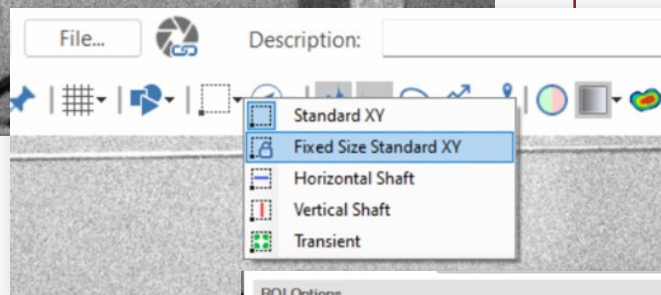
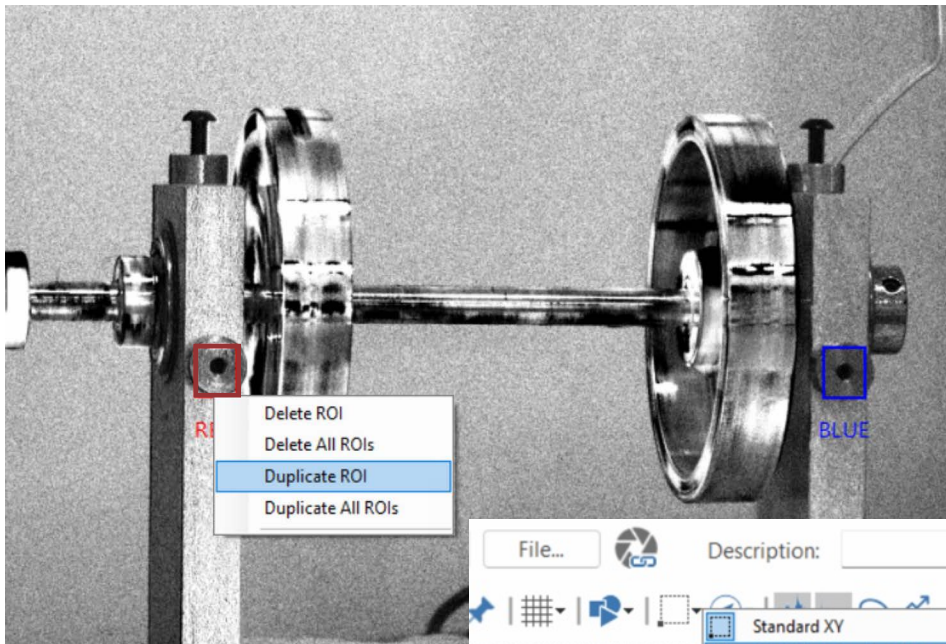
Images Collected: -

Images Stored: -



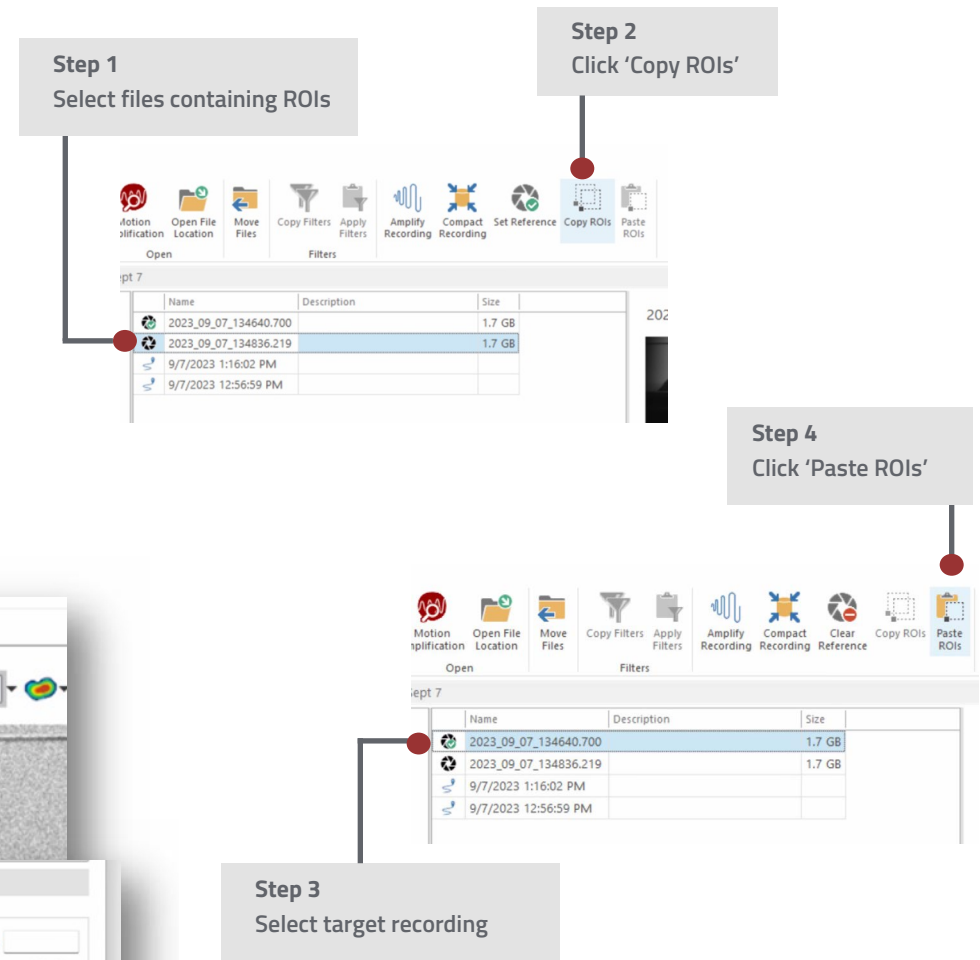
ROI Improvements

Users can now create fixed- sized ROIs for data consistency while utilizing Ctrl+click for rapid placement. Ability to name and label ROIs for improved reporting, easily copy ROIs within a recording and across .rdi files. ROIs drawn during Acquisition now carry into Motion Amplification® for analysis, saving users time and effort.



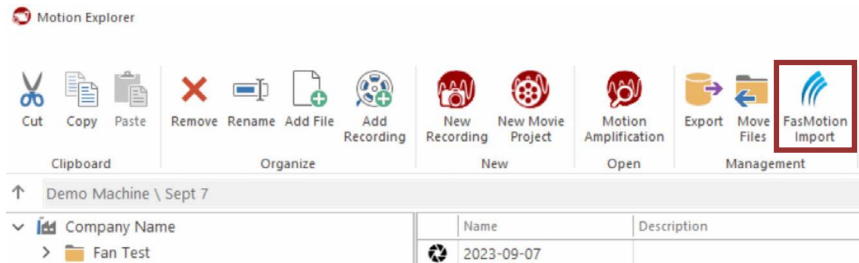
Copy/Paste ROIs Across Recordings in Motion Explorer

Allows users to save time and maintain uniformity by copy ROIs from an existing recording and pasting them into a target recording.



New Icon in Motion Explorer

Import Raw Video Recordings directly from a range of Fastec HS, IL, TS series Cameras.



Fastec Camera Users are now able to import recordings directly into Motion Amplification® to unlock advanced analytic capabilities.



Zoom Box Annotation

New Zoom Box annotation places emphasis on critical features within a recording without needing to edit / crop in Motion Studio or re-capture a recording with higher focal length lenses.

This empowers Users to communicate key information faster and more concisely within Motion Amplification®. Content inside in the Zoom Box is synchronized with recording playback and carries over when exported to MP4.

